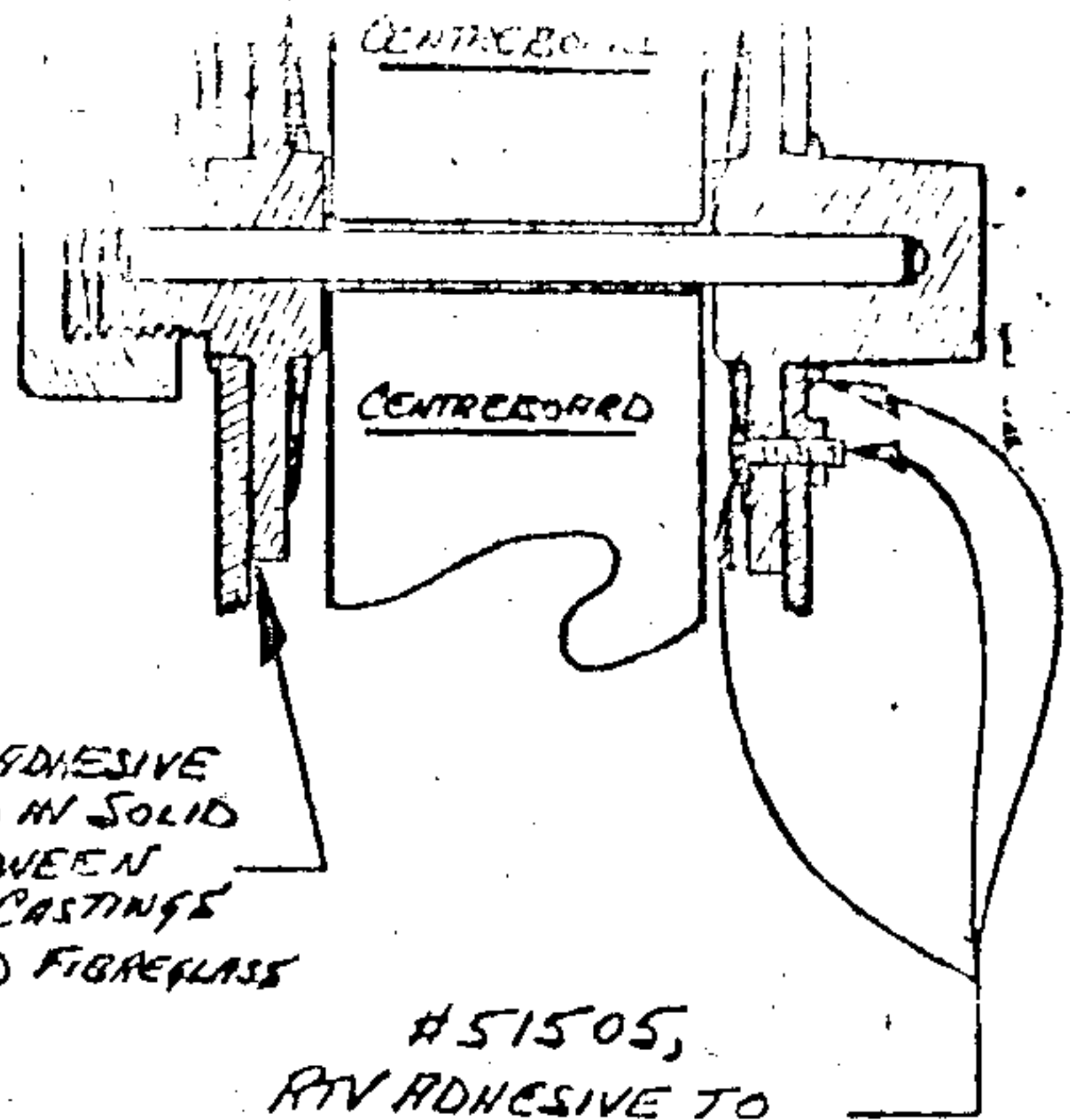


SEAL GAP BETWEEN FUEL COMPARTMENT AND TRANSOM WITH RTV ADHESIVE # 51505, ALL AROUND WHERE FUEL COMPARTMENT MEETS TRANSOM AND LINER.

FUEL TANK COMPARTMENT

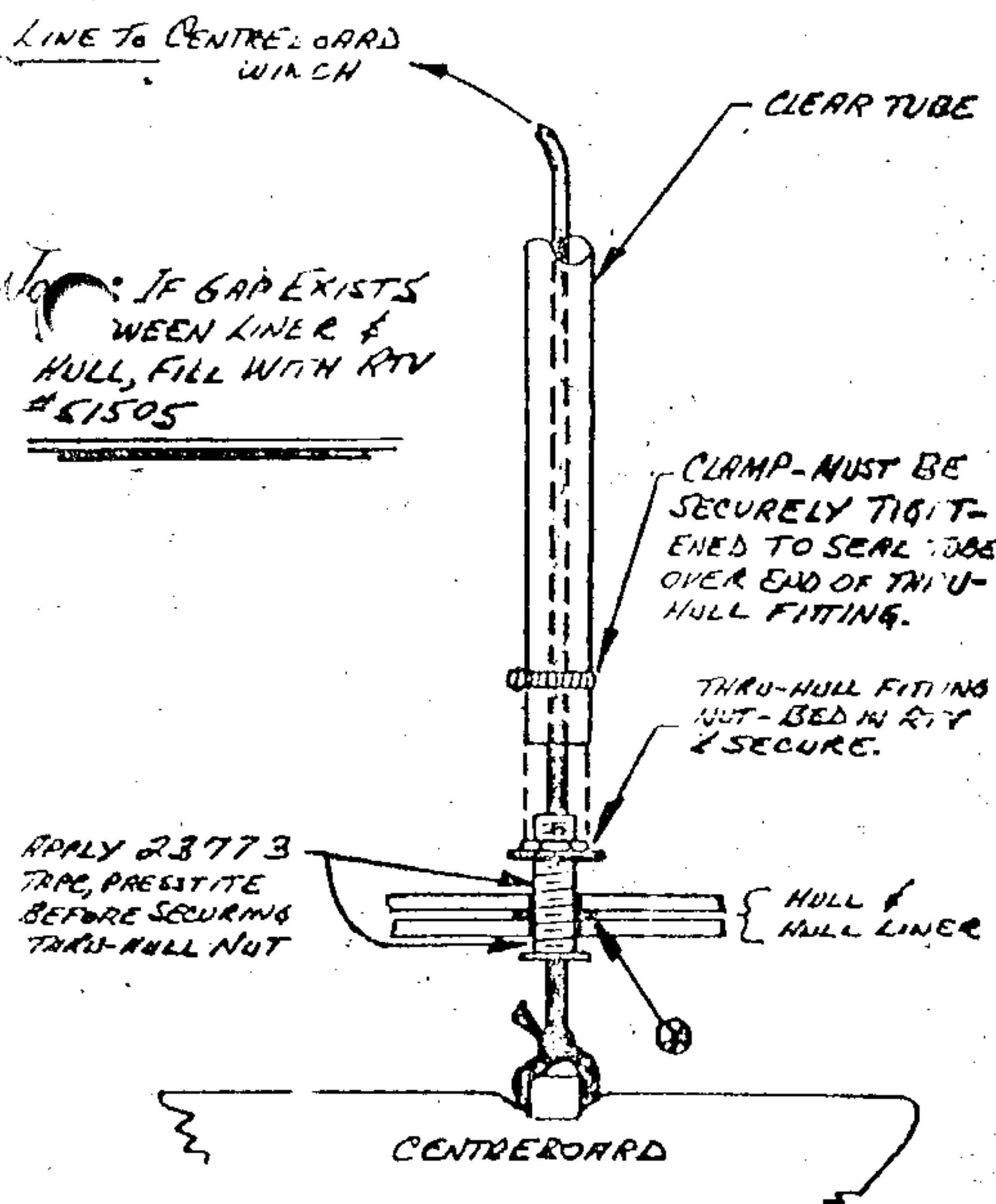
...ITS, TO ...IED BEFORE ...ING NUT.



#51505 RTV ADHESIVE TO BE APPLIED IN SOLID COVERAGE BETWEEN CENTREBOARD CASTINGS (BOTH SIDES) AND FIBREGLASS

CENTREBOARD PIVOT

#51505, RTV ADHESIVE TO BE APPLIED TO ALL BOLT HEADS & NUTS AND CORNERS OF CASTINGS "U", BOTH SIDES OF CENTREBOARD



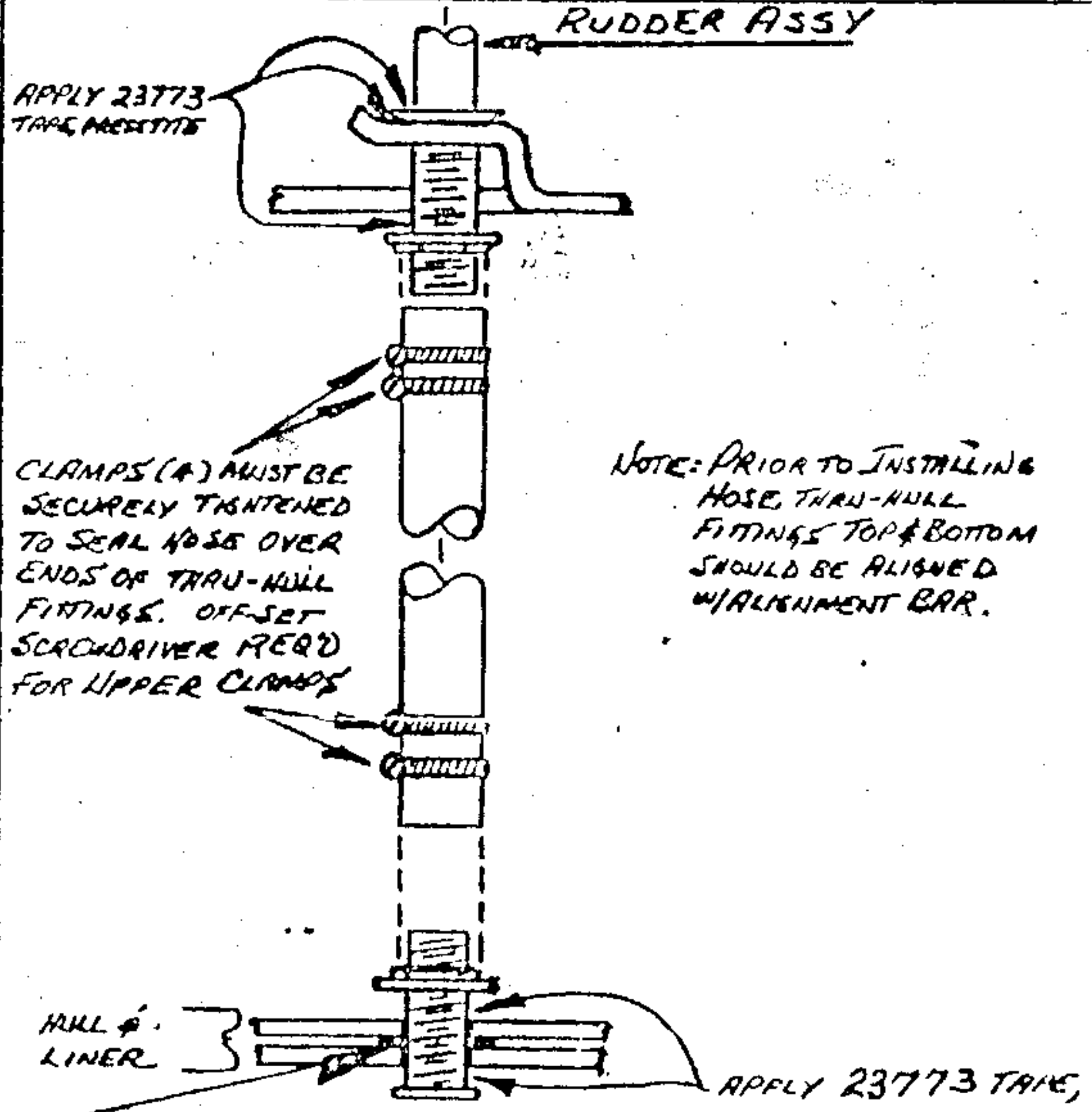
NOTE: IF GAP EXISTS BETWEEN LINER & HULL, FILL WITH RTV #51505

CLAMP - MUST BE SECURELY TIGHTENED TO SEAL HOSE OVER END OF THRU-HULL FITTING.

THRU-HULL FITTING NUT - BED IN RTV & SECURE.

APPLY 23773 TAPE, PRESTITE BEFORE SECURING THRU-HULL NUT

CENTREBOARD-WINCH FITTINGS



APPLY 23773 TAPE, PRESTITE

CLAMPS (A) MUST BE SECURELY TIGHTENED TO SEAL HOSE OVER ENDS OF THRU-HULL FITTINGS. OFF-SET SCREWDRIVER REQ'D FOR UPPER CLAMPS

NOTE: PRIOR TO INSTALLING HOSE, THRU-HULL FITTINGS TOP & BOTTOM SHOULD BE ALIGNED WITH ALIGNMENT BAR.

HULL & LINER

APPLY 23773 TAPE, PRESTITE BEFORE SECURING THRU-HULL FITTING & NUT.

NOTE: IF GAP EXISTS BETWEEN LINER & HULL, FILL WITH RTV #51505.

RUDDER FITTINGS

INSPECTION AREAS
C22 SAILBOAT
(ALL AREAS NOTED MUST BE SECURELY SEALED) TO PREVENT WATER LEAKS

[Handwritten signature]